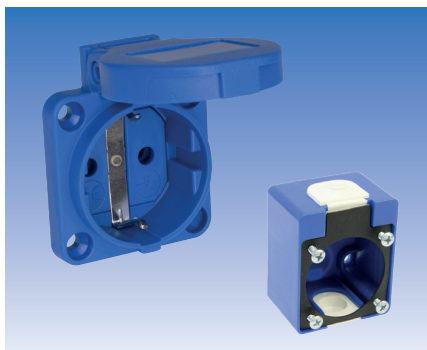


Industrial Plugs and Sockets with Earthing Contact

2pol. + PE, 10/16 A, 250 V, as per DIN 49440 and 49441-2-AR1 (IEC 884) DIN VDE 0620h, CEE7/VII
2pol. + PE, 10/16 A, 250 V, SEV 1011

Order No.



Built-in socket

- with self-closing hinged lid



SCH51P

Wall-mounted socket (lower segment)



SCH61P

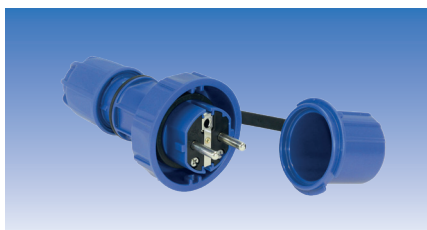
Wall-mounted socket

- no fig. – (SCH51P + SCH61P)



SCH71P

Cable entry from top **and** bottom!

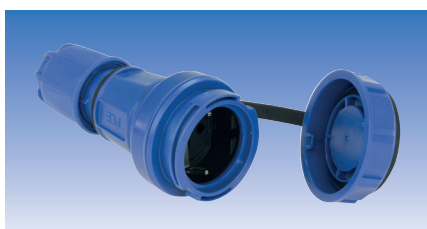


Plug with earthing contact, water-pressure-tight

- with lock ring and cap
- material PC/ABS
- DIN 49 443-R2
- protection class IP66/68



SCH11WDP

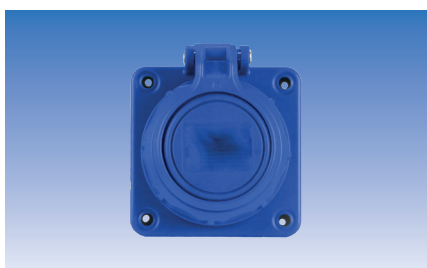


Socket with earthing contact, water-pressure-tight

- with cap
- material PC/ABS
- DIN 49 442-B
- protection class IP66/68



SCH21WDP



Built-in socket, water-pressure-tight

- with self-closing hinged lid
- material PC/ABS
- DIN 49 442
- protection class IP66/68



SCH51WDP

Industrial connection boxes



Connection box 3 pol. / 450 V / 17,5 A

- I-Box, 2 connections
- material PA 6.6, colour black
- dimensions 134 x Ø 27 mm
- cable diameter 7 - 13,5 mm
- protection class IP68

VB2M20

Connection box 5 pol. / 450 V / 17,5 A (no fig.)

- I-Box, 2 connections
- material PA 6.6, colour black
- dimensions 135 x Ø 35 mm
- cable diameter 7 - 13,5 mm
- protection class IP68

VB2M25

Connection box 3 pol. / 450 V / 17,5 A

- T-Box, 3 connections
- material PA 6.6, colour black
- dimensions 116 x 101 x Ø 34 mm
- cable diameter 7 - 13,5 mm
- protection class IP68

VB3M20II

– subject to modification and errors –