

CEE Industrial Connector Systems

as per DIN VDE 0623 Part 1/EN 60309/IEC 60309



SPECIAL FEATURES:

Housing and Inserts

- breakproof and impact-resistant, highly resistant to wear and abrasion → long service life, even under demanding conditions **cost savings**
- high resistance to cold and hot temperatures → dimensionally stable and safe from -25° to +80°
- cadmium- and halogen-free → low impact on the environment
- very strong resistance to a large number of different chemicals → safe during use, even under extreme working conditions

Contacts

- all pins and connectors are nickel-plated → increased level of corrosion resistance, prevents pins and connectors from sticking

Terminal Screws

- easily accessible from one direction → convenient handling during the connection process
- safeguarded against accidental removal when open (ready-to-connect) → time savings

Time position of the earthing contact and color coding:

	4h	9h	6h	11h	7h	5h	12h	1h	10h	2h	3h	8h
Frequency [Hz]	50-60	50-60	50-60	60	50-60	50-60	50-60	-	100-300	over 300 to 500	50-60	
Voltage [V]	57/100 to 75/130	120/208 to 144/250	200/346 to 240/415	250/400 to 265/460	277/480 to 288/500	347/600 to 400/690		over 50	over 50	over 50	220/380 to 250/440 16+32 A	
5-pol. 3-pol.+N+≐												
Voltage [V]	100-130	200-250	380-415	440-460	480-500	600-690	voltage according to isolating transformer		over 50	over 50	380-440 only for 16+32 A	
4-pol. 3-pol.+≐												
Voltage [V]	100-130	380-415	200-250		480-500	277	voltage according to isolating transformer				over 50 to 250 direct current	over 250 direct current
3-pol. 2-pol.+≐												

View of the contact sockets as seen from the front side of the connector sockets.
63 A + 125 A plug connectors with pilot contact.

Position of auxiliary nose to earth nose for voltages up to 50 V and frequencies up to 500 Hz and color coding.:

	-	12h	4h	2h	3h	11h	10h
Frequency [Hz]	50-60	50-60	100-200	300	400	over 400 to 500	GS
Voltage [V]	20-25	40-50	40-50	to 50	to 50	to 50	to 50
2-pole							
3-pole							

View of the contact sockets as seen from the front side of the connector sockets.

Item Numbers

Industrial Connector Systems

110 V ~
50-60 HZ
4 h

230 V ~
50-60 HZ

400 V ~
50-60 HZ
6 h

500 V ~
50-60 HZ
7 h

> 50 V ~
100-300 HZ
10 h

> 50 V ~
301-500 HZ
2 h

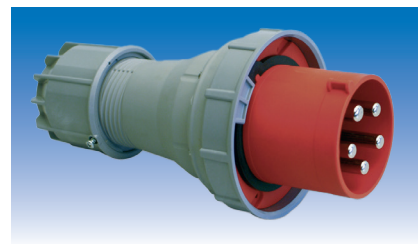
Nominal Current / Ampere
Number of poles

Plugs
Connectors
Surface-Mounted Sockets (tilted)

S1113	S2213					3	16
S1114	S2214	S3814	S5014	S50110H	S5012H	4	16
		S3815				5	16
S1133	S2233					3	32
S1134	S2234	S3834	S5034	S50310H	S5032H	4	32
		S3835				5	32



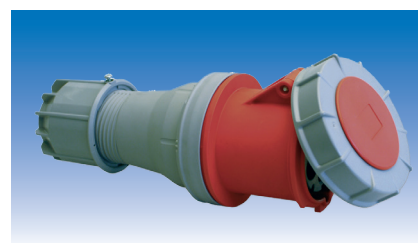
S1163	S2263					3	63
S1164	S2264	S3864	S5064	S50610H	S5062H	4	63
		S3865				5	63
		S38X4	S50X4			3	125
		S38X5				4	125
						5	125



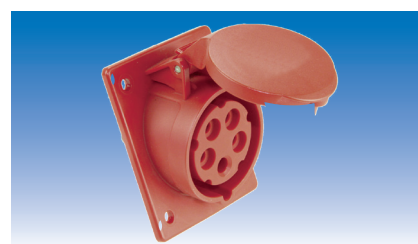
K1113	K2213					3	16
K1114	K2214	K3814	K5014	K50110H	K5012H	4	16
		K3815				5	16
K1133	K2233					3	32
K1134	K2234	K3834	K5034	K50310H	K5032H	4	32
		K3835				5	32



K1163	K2263					3	63
K1164	K2264	K3864	K5064	K50610H	K5062H	4	63
		K3865				5	63
		K38X4	K50X4			3	125
		K38X5				4	125
						5	125



AD1113S	AD2213S					3	16
AD1114S	AD2214S	AD3814S	AD5014S	AD50110HS	AD5012HS	4	16
		AD3815S				5	16
AD1133S	AD2233S					3	32
AD1134S	AD2234S	AD3834S	AD5034S	AD50310HS	AD5032HS	4	32
		AD3835S				5	32



AD1163S	AD2263S					3	63
AD1164S	AD2264S	AD3864S	AD5064S	AD50610HS	AD5062HS	4	63
		AD3865S				5	63
		AD38X4S	AD50X4S			3	125
		AD38X5S				4	125
						5	125



– further models on request / subject to modification and errors –

Item Numbers

Industrial Connector Systems

110 V ~
50-60 HZ
4 h

230 V ~
50-60 HZ

400 V ~
50-60 HZ
6 h

500 V ~
50-60 HZ
7 h

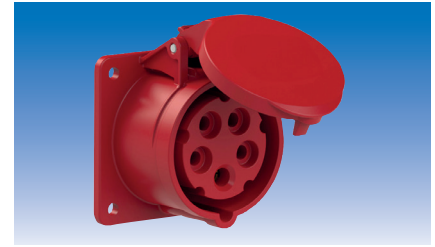
> 50 V ~
100-300 HZ
10 h

> 50 V ~
301-500 HZ
2 h

Number of poles
Nominal Current, Amperes

Surface-Mounted Sockets (straight)
Surface-Mounted Plug Connectors
Wall Sockets

AD1113	AD2213					3	16
AD1114	AD2214	AD3814	AD5014	AD50110H	AD5012H	4	16
		AD3815				5	16
AD1133	AD2233					3	32
AD1134	AD2234	AD3834	AD5034	AD50310H	AD5032H	4	32
		AD3835				5	32



AD1163	AD2263					3	63
AD1164	AD2264	AD3864	AD5064			4	63
		AD3865				5	63
		AD38X4	AD50X4			3	125
		AD38X5				4	125
						5	125



straight version	AGS2213					3	16
	AGS2214	AGS3814	AGS5014			4	16
		AGS3815				5	16
	AGS2233					3	32
	AGS2234	AGS3834	AGS5034			4	32
		AGS3835				5	32



sloping design	ASS2263					3	63
	ASS2264	ASS3864	ASS5064			4	63
		ASS3865				5	63
		ASS38X4	ASS50X4			3	125
		ASS38X5				4	125
						5	125



WSD1113S	WSD2213					3	16
WSD1114S	WSD2214	WSD3814	WSD5014	WSD50110H	WSD5012H	4	16
		WSD3815				5	16
WSD1133	WSD2233					3	32
WSD1134	WSD2234	WSD3834	WSD5034	WSD50310H	WSD5032H	4	32
		WSD3835				5	32



	WSD2263					3	63
	WSD2264	WSD3864	WSD5064			4	63
		WSD3865				5	63
		WSD38X4	WSD50X4			3	125
		WSD38X5				4	125
						5	125



– further models on request / subject to modification and errors –

Item Numbers

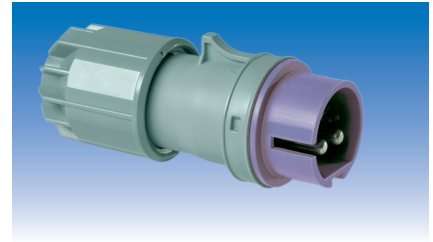
24 V ~
50-60 HZ

42 V ~
50-60 HZ

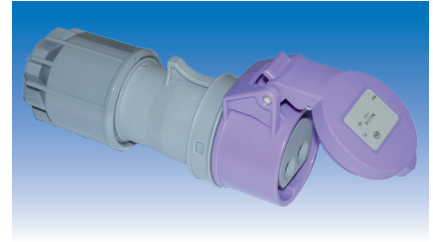
Nominal Current / Ampere
Pole Number

Plug
Connector
Surface-Mounted Socket (tilted)
Surface-Mounted Socket (straight)
Wall Socket

	S2412		S4212			2	16
	S2413		S4213			3	16
	S2432		S4232			2	32
	S2433		S4233			3	32



	K2412		K4212			2	16
	K2413		K4213			3	16
	K2432		K4232			2	32
	K2433		K4233			3	32



straight model	AD2412		AD4212			2	16
	AD2413		AD4213			3	16
	AD2432		AD4232			2	32
	AD2433		AD4233			3	32
tilted model	AD2412S		AD4212S			2	16
	AD2413S		AD4213S			3	16
	AD2432S		AD4232S			2	32
	AD2433S		AD4233S			3	32



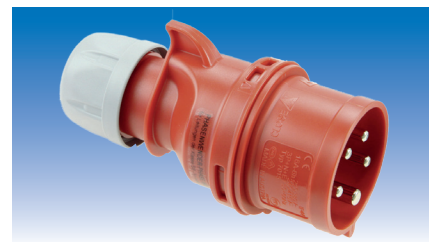
	WSD2412		WSD4212			2	16
	WSD2413		WSD4213			3	16
	WSD2432		WSD4232			2	32
	WSD2433		WSD4233			3	32



400 V ~
50-60 HZ
6 h

Phase Inverter Plug

			PW3815			5	16
			PW3835			5	32



– further models on request / subject to modification and errors –